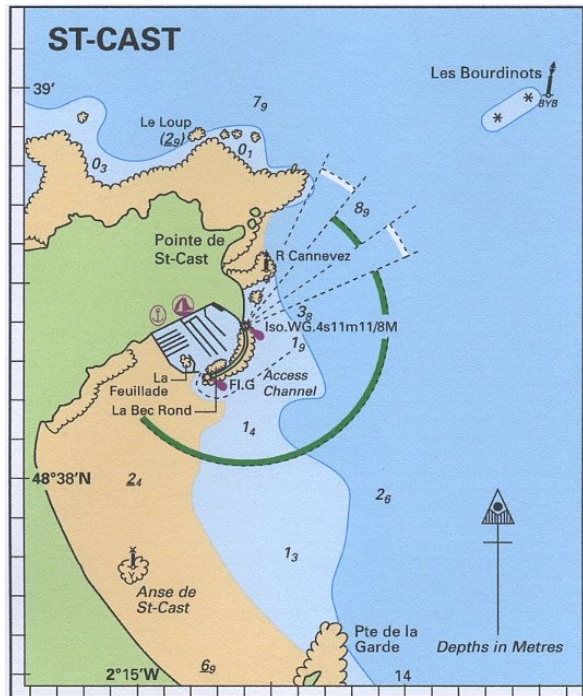


## CRUISING ALMANAC 2009 – 2010

This replaces the entry 'Port de St-Cast' on p336

Charts and tidal data are unchanged

### ST-CAST (LE GUILDO)



A new 780 berth marina has been built by extending the E mole in a WSW direction for approx 350m, the end of which, is marked by a light Iso.WG.4s 11/8M . It has been dredged to 2m. 24h access. There is a substantial tidal range similar to St Malo. The main shops are in the town, 1M. Extensive sandy beach.

**Approach** By day, either side of Les Bourdinots, drying rocks 1M E of Pt de St-Cast, marked by E card buoy. At night, in the W sector of the hbr Lt Iso.WG.4s

**Entrance** Follow round to the S of the new mole. The access channel is marked by small lit R and G buoys.

**Berthing** 40 visitors' berths. As directed or see plan. Alternatively 10 visitors' swinging moorings.

**Facilities** As expected, but currently under development, temporary capitainerie, showers etc near visitors' berths. Slip, boat hoist. Small shops nearby.

**Tel/VHF** Capitainerie 02 96 81 04 43 : VHF 09