

## **NOTICE TO MARINERS**

**No 11 (T) of 2007**

### **Round the Island Yacht Race: Saturday 23 June 2007**

#### **Central Solent - Traffic Restrictions**

**NOTICE IS HEREBY GIVEN** jointly with the Queen's Harbour Master Portsmouth and the Cowes Harbour Master that the 'Round the Island' (Isle of Wight) Race will start from Cowes between 0500 – 0640 on Saturday 23 June 2007. About 1600 yachts are expected to take part in the Race.

In order to control the congestion that is likely to arise in the Central Solent, during the start period and throughout the day, the following procedures will be adopted:

1. The start line will be from the Royal Yacht Squadron westerly transit line and the West Bramble Buoy.
2. Due to the number of competitors taking part, the various class starting times will be staggered to take place at 10-minute intervals between 0500hrs and 0640hrs.
3. The anti-clockwise course around the Isle of Wight will be from Cowes west-about and back to Cowes. Turning marks for the race are at the Needles Lighthouse, Saint Catherine's Point, Bembridge Ledge Buoy and No Mans Land Fort (either side).
4. In order to separate the competitors from any commercial traffic movements intending to pass through the Central Solent, or bound to or from the Port of Southampton, during the starting period, **where possible Masters of vessels not directly involved in the event are to arrange to be clear of the start area by 0430hrs and are not to enter the start area until after 0700hrs or when the bulk of competitors have cleared the area.**

**Masters of Red Funnel Ferries are to avoid passing through the start area and are to arrive at / or leave Cowes passing to the East of the Bramble Bank during the period 0430 - 0700.** (As recommended in the MAIB report of April 1991).

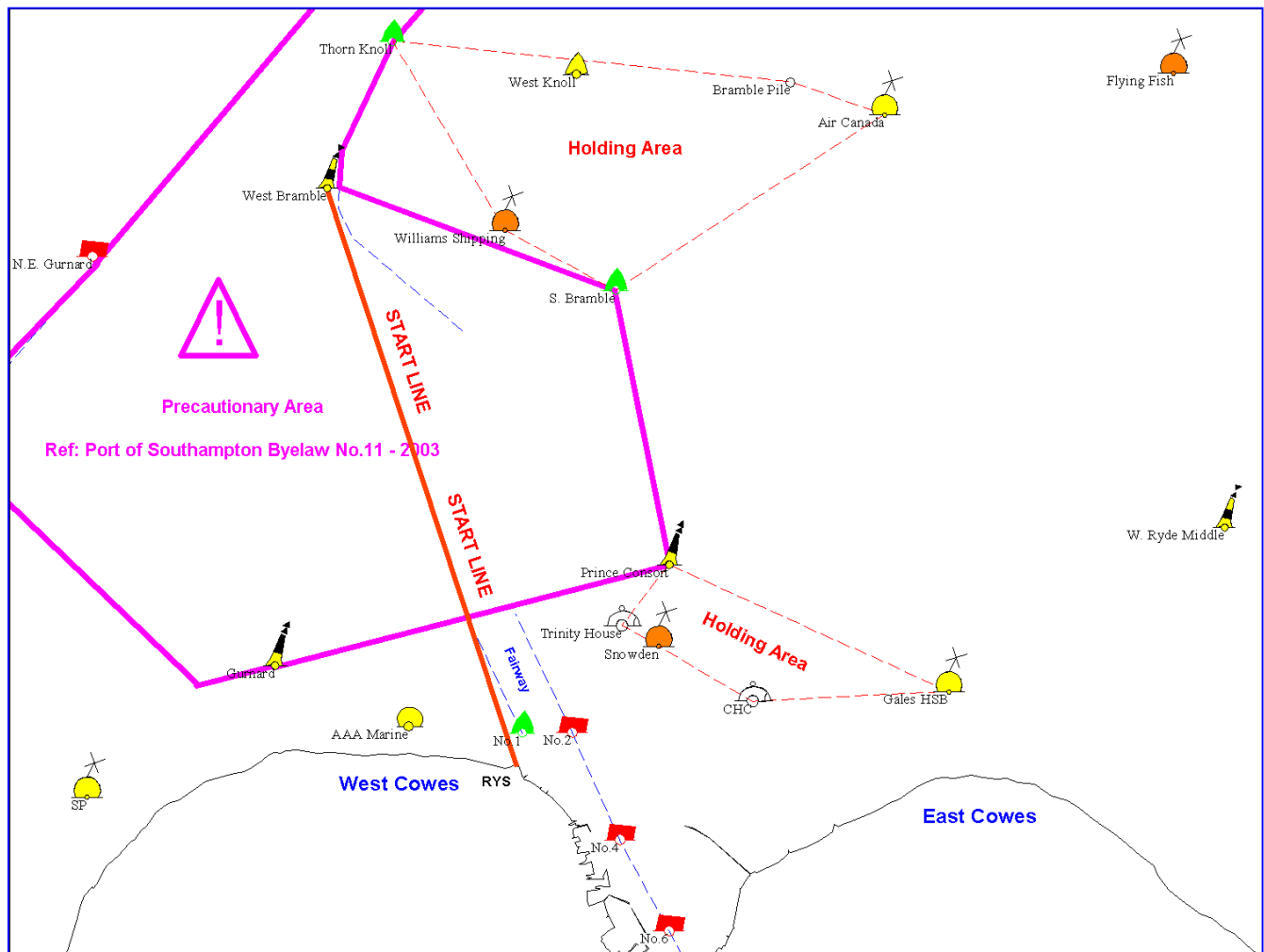
5. It has been agreed with the organisers that all competitors awaiting their class starting time will proceed to the designated holding / waiting areas, as depicted on the attached chartlet, to avoid congestion in the main navigable channel. All competitors will be equipped with VHF radio and will keep a listening watch on Channel 37, in the event that a recall or postponement becomes necessary, for example, for the passage of a large commercial vessel through the area. The firing of a maroon with a bright white flash and loud bang will also signal this from the Royal Yacht Squadron.
6. Whilst the main bulk of the fleet of yachts is expected to pass the Bembridge Ledge Buoy between 1400 and 1700 and the peak finishing time at Cowes is likely to be between 1500 and 1900, it should be noted that the earliest finish could be around 0830 and the finish limit time is 2200. Hence, there will be increased levels of recreational activity within the Central

Solent area throughout this period.

7. Should the weather forecast indicate light airs, the finish line may be adjusted to be in the vicinity of Bembridge Ledge.
8. All spectator craft not taking part in the race are to keep well clear of the start area or are to proceed to one of the designated holding areas, as depicted on the attached chartlet, and keep clear of the Main Channel.

Further information and updates on the 'Round the Island' Race, both ahead of and on Race Day, is available at [www.roundtheisland.org.uk](http://www.roundtheisland.org.uk).

This notice will be self-cancelling on 24 June 2007.



**Vessel Traffic Services Centre  
Berth 37, Eastern Docks  
Southampton**

**Captain P Holliday  
Harbour Master**

8 June 2007

**Owners, Agents, Charterers, Marinas, Yacht Clubs and Recreational Sailing Organisations should ensure that the contents of this Notice are made known to the masters or persons in charge of their vessels or craft.**

This document was created with Win2PDF available at <http://www.win2pdf.com>.  
The unregistered version of Win2PDF is for evaluation or non-commercial use only.  
This page will not be added after purchasing Win2PDF.